

# The hidden function of egg white antimicrobials: egg weight-dependent effects of avidin on avian embryo survival and hatchling phenotype

Eva Krkavcová <sup>1)</sup>, Jakub Kreisinger <sup>1) 2)</sup>, Ludmila Hyánková <sup>3)</sup>, Pavel Hyršl <sup>4)</sup>, Veronika Javůrková <sup>1) 2) 5)\*</sup>

1) *Department of Zoology, Charles University in Prague, Viničná 7, 128 44, Prague, Czech Republic*

2) *Institute of Vertebrate Biology, Czech Academy of Sciences, Květná 8, 603 65 Brno, Czech Republic*

3) *Department of Genetics and breeding of farm animals, VÚŽV v.v.i., Přátelství 815, 104 00, Prague-Uhřetěves, Czech Republic*

4) *Department of Experimental Biology, Faculty of Science, Masaryk University, Kotlářská 2, 611 37, Brno, Czech Republic*

5) *Department of Animal Husbandry, Czech University of Life Sciences, Kamýcká 129, 165 00 Prague – Suchdol, Czech Republic*

\* Corresponding author:

Dr. Veronika Javůrková

Institute of Vertebrate Biology, Czech Academy of Sciences, Květná 8, 603 65 Brno, Czech Republic

phone: +0420 602530986

e-mail: veronika.javurkova@gmail.com

**KEY WORDS:** Albumen, Maternal effects, Antimicrobials, Avidin-biotin complex, Embryogenesis, Plasma complement

## SUMMARY STATEMENT

This is the first experimental study evaluating the effects of increased concentration of egg white antimicrobial protein avidin on embryo viability, hatchling morphology and immune phenotype in birds.

© 2018. Published by The Company of Biologists Ltd.

This is an Open Access article distributed under the terms of the Creative Commons Attribution License (<http://creativecommons.org/licenses/by/3.0>), which permits unrestricted use, distribution and reproduction in any medium provided that the original work is properly attributed.

## ABSTRACT

Avidin is key egg white antimicrobial protein with strong binding capacity for biotin, an essential growth and immune cell precursor. As such, it is assumed to have a pronounced, though still poorly explored, effect on hatchling phenotype. We tested the effect of experimentally increased egg white avidin concentration (AVIDIN+) on hatching success, chick morphology, post-hatching growth performance and innate immune function in a model bird, Japanese Quail (*Coturnix japonica*). Probability of embryo survival in the late embryonic phase increased with increasing egg weight in control eggs, but not in AVIDIN+ eggs. Chicks hatching from lighter AVIDIN+ eggs had a shorter tarsus than chicks hatching from heavier AVIDIN+ eggs. This suggests that an increase in egg white avidin favours embryo survival in lighter eggs during late embryogenesis, but at the expense of reduced structural body size. Plasma complement activity in 6-day old AVIDIN+ chicks decreased with increasing body mass and tarsus length; the opposite was true for control chicks, implying that the later post-hatching innate immune function of larger chicks was compromised by an increase in egg white avidin concentration. Here, we first documented important role of egg white antimicrobials on maintenance of embryo viability, avian hatchlings morphology and immune phenotype.

## INTRODUCTION

In birds, parental investments linked with maternal deposition of different substances into the egg during oogenesis are assumed to directly affect brood and offspring quality (Mousseau and Fox, 1998; Gil, 2003; Navara and Mendonca, 2008; Hasselquist and Nilsson, 2009). Most studies to date have focused on maternal compounds that are deposited into the yolk during oogenesis (e.g. immunoglobulins, steroids, carotenoids) and have a direct effect on offspring prosperity during embryonic and post-embryonic development (Schwabl, 1993, 1996; Groothuis et al., 2005). In comparison, little attention has been paid to the effect of maternally deposited egg white biomolecules on hatchling development and fitness associated traits.

Egg white acts as both a thermal and mechanical defence mechanism for the embryo, is an important source of water and nutrition during development and contains a broad spectrum of proteins that play an essential role during embryo development (Burley and Vadhera, 1989). Experimental studies have shown that the amount of egg white may directly affect offspring phenotype by decreasing hatchling body weight or causing developmental asymmetries (Finkler et al., 1998; Bonisoli-Alquati et al., 2007). Egg white proteins are also thought to provide an effective defence against microbial trans-shell infection. Both the alkaline pH (Grizard et al., 2015) and the presence of antimicrobial proteins (Shawkey et al., 2008, Horrocks et al., 2014) have been shown to significantly reduce the growth of microorganisms (Board and Fuller, 1974) able to penetrate the eggshell and fundamentally affect egg hatchability (Pinowski et al., 1994) and/or offspring phenotype (Javůrková et al., 2014). In addition, many egg white proteins are thought to be important modulators of embryogenesis and immune phenotype; though few correlative studies (Saino et al., 2002, 2007; Bonisoli-Alquati et al., 2010; D'Alba et al., 2010) and only one experimental study (Javůrková et al., 2015) have examined the effect of egg white proteins on the development and post-hatching phenotype of birds. Many egg white proteins also have binding sites specific to metal ions, such as  $\text{Fe}^{3+}$ , or to vitamins, such as biotin, riboflavin or thiamine (Muniyappa and Adiga, 1979; White and Merrill, 1988). Although the binding of these essential molecules to specific proteins prevents their use in the growth and proliferation of many pathogenic microorganisms, their presence is probably more important for proper development of the embryo (Bonisoli-Alquati et al., 2010; Giansanti et al., 2012; Javůrková et al., 2015).

Avidin is a tetrameric protein that occurs in the eggs of all oviparous vertebrates. Each avidin monomer can reversibly bind water-soluble biotin (also called vitamin H) with high affinity and specificity (Board and Fuller, 1974). The binding of biotin to egg white avidin results in its unavailability for microorganisms and thereby prevents their proliferation. As such, avidin can be considered bacteriostatic (Wellman-Labadie et al., 2008). Biotin is involved in many metabolic processes, including production of fatty acids or fats and amino acid metabolism, and has a

significant effect on gene expression and cell proliferation and differentiation during embryogenesis (Dakshinamurti, 2005; Zemleni et al., 2009). Accordingly, an increase in the concentration of egg white avidin may favour a developing embryo by increasing its resistance to pathogens; however avidin's ability to bind the biotin growth precursor may have a negative impact on offspring development and fitness.

In this study, we examine the counteractive action of egg white avidin by studying the effect of avidin manipulation on egg hatchability and morphological traits, growth and innate immune function of hatchlings using Japanese quail as a precocial model species of bird. We test two main hypotheses: i) that eggs with a higher concentration of egg white avidin show improved hatchability and embryo viability, and ii) that chicks hatched from eggs with elevated concentration of egg white avidin display reduced growth, morphometric characteristics and innate immune function compared to chicks from control eggs. There is strong interspecific (Cucco et al., 2009; Bonisoli-Alquati et al., 2010) as well as intraspecific (D'Alba et al., 2010) variability in the concentration of egg white avidin in birds. To assess sensitivity of embryos to experimentally increased concentration of avidin in eggs that vary in initial concentration of this protein, we used three separate lines of Japanese quail having different concentration of avidin in egg whites. Thus, we were able to robustly test potential consequences of variable intraspecific maternal allocation of avidin into the eggs on embryo survival and offspring phenotype.

## RESULTS

### Hatching success and post-hatching survival

We found no effect of egg white avidin manipulation on overall hatching success or embryo mortality in either early or late developmental stages (Table 1; mean  $\pm$  SE probability of hatching =  $0.65 \pm 0.04$  and  $0.58 \pm 0.04$ , and mean  $\pm$  SE probability of surviving early incubation =  $0.90 \pm 0.02$  and  $0.88 \pm 0.03$  for AVIDIN+ vs. control PBS+ eggs, respectively). Overall mean ( $\pm$  SE) hatching success for the HG, K and LG strains was  $0.53 \pm 0.05$ ,  $0.61 \pm 0.05$  and  $0.69 \pm 0.04$ , respectively. A similar pattern was observed when analysing late embryonic mortality:  $0.83 \pm 0.04$ ,  $0.91 \pm 0.03$  and  $0.92 \pm 0.02$  for the HG, K and LG lines, respectively.

We did find a significant interactive effect of avidin treatment vs. egg weight on the probability of survival during the late embryonic phase (Table 1). Although late embryonic phase survival for AVIDIN+ eggs was unaffected by egg weight (Separate GLMM for AVIDIN+ eggs: Logit slope  $\pm$  SE =  $0.038 \pm 0.178$ ,  $\Delta$  D.F. = 1,  $\chi^2 = 0.046$ ,  $p = 0.830$ ), we observed a marked positive association between egg weight and late embryonic survival in the control PBS+ eggs (Separate GLMM for PBS+ eggs: Logit slope  $\pm$  SE =  $0.466 \pm 0.197$ ,  $\Delta$  D.F. = 1,  $\chi^2 = 5.963$ ,  $p = 0.015$ ; Fig. 1).

Post-hatching survival rates were relatively high during the experiment, with only 14.7% of chicks failing to survive the experimental period. Mortality was not associated with line identity, egg weight, avidin treatment or any two-way interaction of these variables (Table 1).

### **Early post-hatching morphological traits**

Avidin treatment had no significant effect on body weight or residual tarsus length in freshly hatched chicks (Table 2). The only variable that showed a significant positive effect on both body weight and residual tarsus length in freshly hatched chicks was egg weight (Table 2). Furthermore, GLMM uncovered a marginally non-significant effect in the interaction between egg weight and avidin treatment on residual tarsus length (Table 2). Visual inspection of the corresponding plots suggests that there is no apparent relationship between egg weight and residual tarsus length for PBS+ chicks. In contrast, AVIDIN+ chicks originating from lighter eggs tend to have a shorter tarsus length than expected based on body weight, the difference not being seen in hatchlings from larger eggs (Fig. 2). Replacing the linear relationship between residual tarsus length and egg weight with a quadratic term significantly decreased the deviance explained ( $\Delta$  D.F. = 1,  $\chi^2 = 6.738$ ,  $p = 0.01$ ), while the egg weight vs. avidin treatment interaction remained marginally non-significant ( $\Delta$  D.F. = 1,  $\chi^2 = 3.704$ ,  $p = 0.054$ ). A quadratic model fitted separately for AVIDIN+ chicks was more informative than the simple linear model ( $\Delta$  D.F. = 1,  $\chi^2 = 6.915$ ,  $p = 0.009$ ) and provided highly significant results compared to the null model ( $\Delta$  D.F. = 1,  $\chi^2 = 25.816$ ,  $p < 0.0001$ ). On the other hand, the null model failed to provide a better fit than the linear relationship between PBS+ chicks ( $\Delta$  D.F. = 1,  $\chi^2 = 1.172$ ,  $p = 0.279$ ). Moreover, inclusion of a quadratic term into the linear model did not decrease residual deviance significantly ( $\Delta$  D.F. = 1,  $\chi^2 = 1.178$ ,  $p = 0.278$ ).

### **Late post-hatching morphological traits**

To assess variation in morphometric parameters over the 15-day experiment, we applied strain specific z-score scaling for each of the six age classes (see Material and Methods for details). The transformed morphometric data had a zero mean and the same variance throughout the experiment. This step considerably reduced analysis complexity, as the data no longer require explicit modelling of growth curves using nonlinear models. We found no support for the effect of avidin treatment or its interactions with other variables when modelling variation in z-score transformed body weight and residual tarsus length (Table 3). The only variable that showed a significant level of support in these models was the interaction of LPS treatment with chick age.

### Post-hatching growth performance and total plasma complement activity

GLMM results indicate LPS treatment as significantly compromising increase in body weight and residual tarsus length in chicks between three and six days after hatching (Table 4). The mean ( $\pm$  SE) increase in tarsus length in PBS-treated control chicks was  $4.36 \pm 0.11$  (pre- and post-treatment averages were  $20.88 \pm 0.18$  mm and  $25.24 \pm 0.26$  mm respectively), but just  $3.68 \pm 0.11$  in LPS-treated chicks (pre- and post-treatment averages were  $21.09 \pm 0.20$  mm and  $24.77 \pm 0.28$  mm respectively). Similarly, body weight between three-day-old and six-day-old chicks increased by  $18.49 \pm 0.66$  g in PBS-treated control chicks (pre- and post-treatment averages were  $22.85 \pm 0.77$  g and  $41.34 \pm 1.34$  g respectively), but only by  $15.39 \pm 0.60$  g in LPS-treated chicks (pre- and post-treatment averages were  $23.36 \pm 0.83$  and  $38.75 \pm 1.36$  respectively). However, there was no difference in LPS treatment response in freshly hatched AVIDIN<sup>+</sup> and PBS<sup>+</sup> chicks, the interaction between avidin and LPS treatment being non-significant (Table 4). The effect of all other variables included in the model was also non-significant.

Because data on complement activity were obtained for 125 chicks (due to plasma sample loss), and LPS treatment had no effect on total plasma complement activity (Univariate GLM:  $\Delta$  D.F. = 1,  $\chi^2 = 0.096$ ,  $p = 0.757$ ), the main and interactive effects of LPS treatment were excluded from the GLMM to maintain a reasonable ratio between sample size and number of explanatory variables. We found highly significant support for the interactive effect of avidin treatment and all morphometric parameters on plasma complement activity (Table 5). There was a positive association between plasma complement activity and body weight (slope  $\pm$  SE =  $0.301 \pm 0.101$ ,  $\Delta$  D.F. = 1,  $\chi^2 = 8.087$ ,  $p = 0.004$ ), and against residual tarsus length (slope  $\pm$  SE =  $0.270 \pm 0.105$ ,  $\Delta$  D.F. = 1,  $\chi^2 = 6.140$ ,  $p = 0.013$ ) in AVIDIN<sup>+</sup> chicks, suggesting that total plasma complement activity was compromised in larger chicks after avidin manipulation (Fig. 3A). On the other hand, we observed a marginally non-significant association between total plasma complement activity and body weight (slope  $\pm$  SE =  $-0.233 \pm 0.118$ ,  $\Delta$  D.F. = 1,  $\chi^2 = 3.735$ ,  $p = 0.053$ ), and a non-significant relationship between plasma complement activity and residual tarsus length, in PBS<sup>+</sup> chicks (slope  $\pm$  SE =  $-0.117 \pm 0.115$ ,  $\Delta$  D.F. = 1,  $\chi^2 = 1.023$ ,  $p = 0.312$ ; Fig. 3B). Nevertheless, neither the main effect of avidin treatment nor other explanatory variables were associated with total plasma complement activity.

## DISCUSSION

In this study, we provide the first experimentally documented evidence for the critical function of the antimicrobial protein avidin on avian embryogenesis. Specifically, we noted an increased probability of embryo survival during the late embryonic developmental phase with increasing egg weight in eggs with normal concentrations of egg white avidin. In contrast, the probability of late embryonic phase survival for avidin-treated eggs remained the constant, regardless of egg weight. In other words, the probability of survival during the late embryonic phase was greater for embryos developing in lighter eggs following supplementation of egg white with avidin compared to embryos developing in lighter eggs without supplementation. The question arises: How does supplementation with avidin in eggs with lower egg mass improve embryo survival in the late embryonic phase?

The positive effect of egg mass on embryo survival has been well documented in both commercial (Ishaq et al., 2014) and wild breeding birds (e.g. D'Alba and Torres, 2007; Krist, 2011). This is to be expected, as proper embryo development is highly dependent on the amount of egg nutrient proportionally distributed in the yolk and egg white (Palmer and Guillette, 1991; Groothuis and Engelhardt, 2005). Because absolute mass of all egg components (i.e. yolk, egg white) is higher in larger eggs (Williams, 1994; Hill, 1995), embryos in larger/heavier eggs have the advantage of a higher proportion of nutrients. It is worth noting, however, that the content of yolk and egg white in different sized eggs is not proportionally constant in birds, and that positive or negative allometry exists in yolk/egg white content across taxa. A relatively higher proportion of egg white has been documented in larger/heavier eggs for most altricial birds, whereas precocial birds tend to have relatively more yolk content in larger eggs (Williams, 1994; Hill, 1995). Consequently, the improving effect of egg weight on embryo survival during the late embryonic phase documented in our study is most probably related to the increased nutrient content in the larger egg yolks of heavier quail eggs. This assumption is supported by the importance of the amount of macromolecules in egg yolk during late stages of embryo development (Moran, 2007), while earlier in embryonic development, the properties of the egg white are more important for embryonic survival (Christensen, 2001).

There are many possible scenarios explaining the positive effect of avidin treatment on embryo survival in lighter eggs during the late phase of embryogenesis. The most plausible explanations are related to mechanisms linked with the binding capacity of avidin to other biomolecules. In addition to previously documented strong binding affinity of avidin for biotin (Green, 1975), each avidin monomer has one N-linked carbohydrate side chain, and 10% of avidin mass could be explained by the carbohydrates (mannose and N-acetylglucosamine) content (DeLange, 1970; Bruch and White, 1982). Although bird eggs are rich in carbohydrates (Burley

and Vadehra, 1989), carbohydrates play an essential role in embryo and hatchling nutrition (Moran, 2007) and are developmentally important during the both early and late embryonic phases, especially in precocial birds (Foye et al., 2007). Sunny and Bequette (2010) noted that gluconeogenesis rate (i.e. the forming of glucose *de novo*, especially from amino acids) is greater in chick embryos developing from smaller eggs. They also observed greatly reduced concentrations of gluconeogenic amino acids in the blood of 12 to 18-day-old embryos from small eggs, probably related to reduced embryonic growth resulting from utilisation of these amino acids during increased gluconeogenesis. We therefore suggest that enrichment of egg white with glycoprotein in the form of avidin (i.e. a change in the proportion of carbohydrates to amino acids) may improve carbohydrate sources for embryo during the late embryogenesis and, subsequently, increases the probability of embryo survival during this phase. However, although there has yet to be any experimental testing of such mechanisms in avian embryogenesis, further studies are needed, to test whether and how enrichment of egg white with avidin increases survival of embryo during different phases of embryo development in precocial and/or altricial birds.

Our experimental study supported the expected negative effect of increased egg white avidin concentration on chick morphology due to its extremely strong binding capacity to biotin (Green, 1975). Specifically, chicks hatching from lighter eggs supplemented with egg white avidin suffered from reduced structural body size (i.e. residual tarsus length) compared with those hatched from heavier, avidin-supplemented eggs. For chicks hatched from un-manipulated control eggs, this effect was lacking. These results are in agreement with those of Bonisoli-Alquati et al. (2010), who observed that an increased concentration of egg white avidin in natural eggs negatively affected tarsus length in yellow-legged gull (*Larus michahellis*) chicks. We believe that our observed egg-weight dependent negative effect of increased egg white avidin concentration on structural body size in freshly hatched quail chicks is linked with avidin's potential to affect *in ovo* biotin availability. Because biotin, which is released via biotinidase activity from egg yolk during embryogenesis, has multiple functions (e.g. it is strongly involved in the metabolism of proteins, lipids and carbohydrates [Couch et al., 1948; Dakshinamurti, 1994] and affects cell proliferation by influencing level of gene expression [Manthey et al., 2002; Dakshinamurti, 2003, 2005]), it is not surprising that biotin deficiency during embryogenesis in mammals resulted in inhibition of embryo development, embryo malformations and increased embryo mortality (Watanabe, 1993; Valenciano et al., 2002; Watanabe et al., 2009). There have only been a limited number of studies to date evaluating the role of *in ovo* biotin availability on embryogenesis in birds (e.g. Cravens et al., 1944; Whitehead et al., 1985). The most recent (Taniguchi and Watanabe, 2007) noted that concentration of free unbound biotin in chicken egg yolk increased immediately after fertilization and, while most was incorporated by the embryo within the first three to four days, yolk concentration remained



high during the first 11 days of embryo development. This free yolk biotin may penetrate through the vitelline membrane into the egg white in the later phases of embryogenesis, where it is probably trapped by avidin (Bush and White, 1989). Once the biotin is irreversibly bound to avidin, it becomes unavailable to the embryo until the day before hatching, when the embryo usually swallows the rest of the egg white and withdraws the yolk sac into its abdomen (White et al., 1992). There is strong evidence for the negative effect of biotin deficiency on growth performance in birds (Whitehead et al., 1985; Watkins, 1989; Zhu et al., 2012). Further, both *in vitro* (Zerega et al., 2001; Takechi et al., 2008) and *in vivo* studies (Hocking et al., 2013) have shown avidin suppressing biotin availability and development of chondroid and skeletal tissue. Hence, we assume that embryos developing in lighter avidin-treated eggs with less yolk (and thus less biotin) are more negatively affected by increased avidin as it traps diffused yolk biotin during the late phases of embryogenesis. As a result, tibia bone development is reduced compared with embryos developing in heavier avidin-manipulated eggs, where more yolk, and hence free biotin, is available. Although we were unable to measure biotin content in different sized experimental eggs during this study, and multiple intrinsic factors may be involved during embryo development, our findings strongly support the assumption that egg white avidin favours embryo survival in nutritionally poorer small eggs, though at the expense of reduced structural body size.

In our experimental study, we evaluated the role of egg white avidin concentration on growth performance and innate immunity in LPS-treated and un-treated quail chicks. We found that LPS treatment had no effect on total plasma complement activity, though it compromised chick growth performance, including both overall and structural body size. Our finding regarding the growth inhibiting effect of LPS treatment is in agreement with previous studies on poultry (Liu et al., 2015; Wang et al., 2015; Zheng et al., 2016). However, it is surprising that despite the evidence for avidin's involvement in regulation of tissue injury or viral transformation induced inflammation processes (Korpela et al., 1983; Elo and Korpela, 1984), and fact that antimicrobial and complement-related proteins are considered some of the main innate immunity effector molecules (Buchmann, 2014), we failed to observe any interactive effect of LPS treatment and egg white avidin treatment on total plasma complement activity. But, when we compared total plasma complement activity of control and LPS-treated six-day-old chicks, we found that total plasma complement activity in large chicks was compromised due to increased egg white avidin concentration. In particular, plasma complement activity in six-day-old chicks from eggs with experimentally increased egg white avidin concentrations decreased while body weight and residual tarsus length increased. The opposite effect was observed in chicks from control eggs. This suggests a trade-off in resource allocation strategies in embryos and/or hatchlings between growth and immunity.

Support for resource allocation in embryos from avidin-treated eggs is provided by Schmidt et al. (2015), who found that adult song sparrows (*Melospiza melodia*) reared under stressful condition had a reduced innate immune response, suggesting allocation strategies for immune system development under sub-optimal rearing conditions. Similarly, Kriengwatana et al. (2013), in their study on zebra finches (*Taeniopygia guttata*), pointed out the importance of juvenile developmental condition on changes in immune and adult phenotype. As our findings suggest a negative effect of increased egg white avidin concentration on structural body size in quail hatchlings, we hypothesize that embryo developmental conditions in avidin-manipulated eggs were stressful and limited. This probably forced the embryos, and subsequently hatchlings, to allocate more resources into impaired development than immunity, resulting in a reduction in innate immunity function. Support for the negative effect of egg white avidin on innate immunity function can be found in Bonisoli-Alquati et al. (2010), who documented an impaired phytohaemagglutinin-induced immune response in three-day-old yellow-legged gull chicks due to an increased concentration of egg white avidin.

In addition to the role played by egg white avidin as an essential egg white antimicrobial agent, protecting the embryo from invading microorganisms, the results of our experimental study provide a new insight into the role of egg white avidin as strong precursor of growth and innate immune function and essential developmental factor, affecting embryogenesis and having underlying phenotypic consequences in birds. However, according to our data, the effect of avidin was always dependent on the context of other factors such as egg weight or post-hatching immune challenge. We therefore conclude that future research should ask how these complex mechanisms are translated to fitness payoffs and what conditions favour higher maternal allocations of avidin into the egg under natural setup in precocial and altricial birds.

## **MATERIAL AND METHODS**

### **Model species**

We used the eggs of three separate lines of Japanese quail, a medium sized galliform species, selected for the shape of their growth curve and varying in concentration of egg white avidin (for details see below) for experimental testing. Specifically, LG (low relative body weight gain between 11 and 28 days), HG (high relative body weight gain between 11 and 28 days) and C (an unselected control line) lines were used (see Hyánková et al., 2004, for details). All three lines were housed at the Institute of Animal Science in Prague-Uhrineves (Czech Republic).

### Pre-experimental measurement of egg characteristics

To assess line-specific differences in total egg weight, egg white volume and egg white avidin concentration, pre-experimental measurements were undertaken on freshly laid eggs ( $n = 30$  for each quail line), the third and fourth eggs in each laying sequence randomly collected over two consecutive days. The eggs were cleaned with 70% ethanol and weighed to the nearest 0.01 g using a KERN CM50-C2M digital balance. Total egg weight (mean  $\pm$  SE) for HG, LG and C eggs was  $12.6 \pm 0.76$ ;  $13.1 \pm 0.61$  and  $12.36 \pm 0.76$  g, respectively, and showed no significant variation between lines (one-way ANOVA,  $F_{(2,77)} = 0.631$ ;  $p = 0.535$ ). To obtain egg white volume (mean  $\pm$  SD), eggs were cracked, the egg whites and yolks carefully separated and each egg white weighed to the nearest 0.001 g. These weights were converted to volume (nearest 0.01 ml) based on the measurement of 1000  $\mu$ l of egg white whose weight was 0.965 g. This method enabled us to avoid possible inaccuracy in direct volume measurement caused by egg white viscosity. Line-specific egg white volume was calculated based on egg white weight multiplied by a coefficient of 0.965, corresponding to volumetric mass density of egg white for each quail line. Egg white volume (mean  $\pm$  SE) for HG, LG and C line eggs was  $6.7 \pm 0.48$  mL;  $6.9 \pm 0.46$  mL and  $6.8 \pm 0.55$  mL, respectively, and showed no significant variation between lines (one-way ANOVA;  $F_{(2,77)} = 0.361$ ;  $p = 0.702$ ). Each fresh egg white was subsequently analysed for avidin concentration (mean  $\pm$  SE, in order to calculate line-specific total egg white avidin concentration). Egg white avidin concentration differed significantly between quail lines (one-way ANOVA,  $F_{(2,59)} = 21.803$ ;  $p < 0.0001$ ), with line-specific egg white avidin concentrations (mean  $\pm$  SE ( $\mu$ g/mL) for HG, LG and C line eggs of  $0.88 \pm 0.64$ ;  $2.75 \pm 1.24$  and  $1.96 \pm 1.05$ , respectively.

### Analysis of egg white avidin concentration

Egg white avidin concentration ( $\mu$ g/mL) was based on a slightly modified version of the 96-well plate method of Shawkey et al. (2008). We diluted each egg white sample 10-fold in carbonate-bicarbonate buffer (made from Sigma Aldrich C3041 capsules, following manufacturer instructions). We then added 100  $\mu$ l of carbonate-bicarbonate buffer to each well (except the first, fifth and ninth well in each row) along rows 1-11 of a Nunc MaxiSorp® flat-bottom 96-well plate. In order to ensure accurate pipetting of undiluted and diluted egg white samples, we used GENO-DNA S pipette tips (CS960 9405120, Thermo Scientific), specially designed for viscous liquids. Sample absorbances were measured at 450nm using a TECAN Infinite® 200 PRO UV/Vis microplate reader (Tecan Group Ltd., Switzerland). Avidin concentrations (considering egg white serial dilutions) were determined by interpolating from a standard curve for each plate using GraphPad Prism 5 Software (inter-assay and intra-assay coefficients of variability were 14.8% and 3.7%, respectively).

## Manipulation experiment

The manipulation experiment consisted of three replicates of 3 x 150 experimental eggs. For each experimental replicate, we used freshly laid eggs ( $n = 150$ ; 50 HG, 50 LG, 50 C quail line eggs) from 40 line-specific breeding hens (i.e. each hen producing a maximum of two eggs for our purposes), using the third and fourth eggs in each laying sequence collected randomly over two consecutive days. These were placed into portable plastic boxes and stored in an air-conditioned dark room at 21 °C for no more than 24 hours. The 50 eggs of each quail line were then randomly divided into two groups: i) those manipulated *in ovo* with avidin = AVIDIN+ eggs, and ii) a control group with sterile phosphate buffer saline (PBS), injected *in ovo* = PBS+ eggs. After cleaning with 70% EtOH, AVIDIN+ eggshells were gently perforated with a  $0.33 \times 12.7$  mm Micro-Fine Plus needle (5mm below the equatorial region, toward the blunt end) and, using a 1ml insulin syringe, injected with 50  $\mu$ l of a solution containing purified lyophilised egg white avidin (A9275, Sigma Aldrich) diluted in sterile PBS (GIBCO®, pH 7.2, Invitrogen). The quantity of injected avidin corresponded to one standard deviation of line-specific mean egg white avidin content (for HG line eggs, 4.3  $\mu$ g; for LG line eggs, 8.6  $\mu$ g; for C line eggs, 7.2  $\mu$ g of PBS-diluted avidin). PBS+ eggs were processed identically, but injected with 50  $\mu$ l of sterile PBS only. Needle perforations in the eggshells were sealed using a gel-based adhesive (Loctite-Super Attack, Henkel, USA), and the eggs were placed into an OvaEasy 190 Advance incubator with automatic egg turning (Brinsea Products Inc., USA).

Optimal incubation conditions for Japanese quail eggs are 37.6 °C and 58% relative humidity, with relative humidity increased to 80% during the egg hatching period (see Pedroso et al., 2006). To control for chick identity, each egg was placed into a net sack two days before hatching (Hořák and Albrecht, 2007). An egg was assigned as fertile post-treatment following successful hatching or in the presence of a cicatricula or dead embryo inside an unhatched egg (Sellier et al., 2006). For unhatched eggs with dead embryos, stage of embryo mortality during the first (early) and third (late) trimester of development was assigned based on the developmental stages described by Hamburger and Hamilton (1992). Specifically, death of an embryo in the first six days of incubation (stages 1 to 29) was assigned as early embryonic mortality and from 12 to 17 days of incubation (stages 38 to 46) as late embryonic mortality (see Hamburger and Hamilton 1992 for details).

## Post-hatching experimental procedures

Chick body weight ( $\pm 0.1$  g) and length of both tarsi ( $\pm 0.1$  mm) was measured immediately after hatching using a Kern CM50-C2M digital balance and digital callipers. The same morphometric parameters were measured at three-day intervals throughout the 15-days post-hatching period (all chicks were measured six times over 15 days). To control for chick identity, each was individually marked with a coloured plastic ring with a unique number.

To induce the chick's innate immunity, three-day-old chicks from each line were randomly divided into two groups. Each chick in one group was injected intramuscularly with 80  $\mu$ l lipopolysaccharide (LPS) solution (dose equivalent to 8 mg LPS per kg of body weight) dissolved in sterile PBS using a 1ml insulin syringe (hereafter known as LPS-treated chicks). As body weight differed considerably among three-day-old chicks from different quail lines, doses were adjusted to 0.104, 0.208 and 0.184 mg LPS for HG, LG and C line chicks, respectively. Chicks in the second group (i.e. control PBS-treated chicks) were injected with 80  $\mu$ l of sterile PBS only.

Blood samples from a brachial vein puncture were collected into 40  $\mu$ l heparinised capillaries (Keraglass, Czech Republic) six days after hatching (i.e. three days after LPS/PBS treatment) in order to measure total plasma complement activity. The capillaries were placed on ice and centrifuged for 10 min at RCF = 2000  $\times$  g within one hour using a refrigerated capillary centrifuge (Eppendorf, Hamburg). Plasma supernatants were separated and transferred into 1.5ml sterile cryotubes (Merck, Czech Republic) and stored at  $-80^{\circ}\text{C}$  until analysis.

## Analysis of plasma complement activity

Plasma complement activity was measured using a modified version of the method outlined by Buchtikova et al. (2011). Briefly, total plasma complement activity was determined through a bioluminescence-based method that used transformed *Escherichia coli* K12 with the luxABCDE gene on the bacterial plasmid, which expresses bacterial luciferase (Lux) and its substrate, a long-chain aldehyde. The time in seconds required for 50% viability of *E. coli* was evaluated using kinetic curves corresponding to the plasma complement activity of each plasma sample. There is an inverse relationship between time of *E. coli* viability and total plasma complement activity; a shorter time representing higher total plasma complement activity.

## Statistical analysis

Generalized linear mixed models (GLMMs) were used to analyse the data, with the identity of the experimental replicate included as a random effect in all models to account for this source of variation. Further, we applied strain-specific z-score transformation to all continuous variables included in individual models (detailed below) in order to maintain constant variation and zero

mean for all three quail lines used in the experiment. This allowed us to avoid poor fit of the models due to inconstant variation of residuals between individual quail lines. Importantly, line-specific scaling of continuous variables resulted in less complex minimal adequate models, because the significance of morphometric parameters that are known to differ between quail lines (see Hyánková et al., 2004, 2015), but have effects irrelevant to our experiment, was offset by this step. Because data on tarsus length and body weight were highly correlated (Pearson's  $r = 0.320$ ,  $p < 0.0001$ ), body weight was assumed to reflect overall body size and residuals from linear regression between body weight and tarsus length were assumed to reflect structural body size. These were then used as response variables in all statistical models to achieve orthogonality and to avoid multicollinearity in fitting models.

The effect of avidin treatment on hatching success was analysed using binary GLMM (binomial distribution, logit link). First, hatched vs. unhatched eggs were coded as binary response variables. The same approach was used during separate analyses of early and late embryonic mortality (see Material and Methods for more detail). The binomial GLMM approach described in Aebischer (1999) was then used to analyse post-hatching survival rate. Briefly, the number of unsuccessful days (0 for hatchlings that survived the 15-d post-hatching experimental period; 1 for those that died during the post-hatching experimental period) vs. the number of successful days was computed for all individuals and included as a binomial response variable in the GLMM.

Morphological traits and post-hatching growth performance were analysed by assessing whether overall body size (i.e. body weight) and structural body size (i.e. body weight vs. tarsus length linear regression residuals) after hatching differed between treatment groups by including these variables as a response in a GLMM. Avidin treatment, line identity, egg weight and all two-way interactions were included as explanatory variables. Scaled body weight and residual tarsus length following z-score transformation were calculated separately for each of the six age classes and three quail lines. The effect of chick age was included as a third order polynomial as both a fixed and random effect in the model. The random structure of these models accounts for the same individual being measured repeatedly.

The effect of LPS treatment on growth performance was analysed using a GLMM with difference in body weight and residual tarsus length between three-day-old and six-day-old chicks as a response variable. LPS treatment, avidin treatment, line identity and their two-way interactions were included as explanatory variables in the GLMM.

Finally, we assessed the extent to which total plasma complement activity (included as a response variable) was affected by avidin treatment, line identity, body weight and residual tarsus length of 6-day-old chicks, with two-way interactions between these variables included as explanatory variables in the GLMM.

For all the above GLMM, we assessed the degree to which line specific scaling affected model outcome. In all cases, we found that the model outcomes obtained using unscaled data were consistent with, or less conservative than, outcomes of models fitted for scaled data.

All analyses were performed using R software v. 3.0.2 (R Development Core team, 2013). The models were fitted using the lme4 package running under R (Bates et al., 2013). Predictions  $\pm$  95% bootstrap confidence intervals (10000 steps) of relevant terms were generated using the ez package in R (Lawrence, 2012).

## **Acknowledgements**

We thank Kevin Roche for proofreading and corrections of English. We also thank to Libor Vojtek for his technical assistance with measures of total plasma complement activity, and to Oldřich Mach and Eva Machová for technical support at the Praha-Uhrineves Japanese quail hatchery.

## **Competing interests**

The authors declare no competing or financial interests.

## **Funding**

This study was supported by the Charles University Grant Agency (147610/2010/B-Bio), Czech Science Foundation (14-16861P), Institutional Research Support of the Charles University in Prague (SVV-2012-265 206) and Academy of Sciences of the Czech Republic (RVO: 68081766). V. J. was also partially supported by the NextGen project (CZ.1.07/2.3.00/20.0303).



## References

- Aebischer, N. J.** (1999). Multi-way comparisons and generalized linear models of nest success: extensions of the Mayfield method. *Bird Study* **46**, 22-31.
- Bates, D., Maechler, M. and Bolker, B.** (2013). lme4: Linear mixed-effects models using Eigen and Eigenfaces. *R package version 0.999999-2*. <http://CRAN.R-project.org/package=lme4>
- Board, R.G. and Fuller, R.** (1974). Nonspecific antimicrobial defences of avian egg, embryo and neonate. *Biol. Rev.* **49**, 15-49.
- Bonisoli-Alquati, A., Rubolini, D., Romano, M., Boncoraglio, G., Fasola, M. and Saino, N.** (2007). Effects of egg albumen removal on yellow-legged gull chick phenotype. *Funct. Ecol.* **21**, 310-316.
- Bonisoli-Alquati, A., Rubolini, D., Romano, M., Cucco, M., Fasola, M., Caprioli, M. and Saino, N.** (2010). Egg antimicrobials, embryo sex and chick phenotype in the yellow-legged gull. *Behav. Ecol. Sociobiol.* **64**, 845-855.
- Bruch, R. C. and White, H. B.** (1982). Compositional and structural heterogeneity of avidin glycopeptides. *Biochemistry* **21**, 5334-5341.
- Buchmann, K.** (2014). Evolution of innate immunity: clues from invertebrates via fish to mammals. *Front. Immunol.* **5**, 8.
- Buchtikova, S., Simkova, A., Rohlenova, K., Flajshans, M., Lojek, A., Lilius, E. M. and Hyrsl, P.** (2011). The seasonal changes in innate immunity of the common carp (*Cyprinus carpio*). *Aquaculture* **318**, 169-175.
- Burley, R. W. and Vadehra, D. V.** (1989). *The avian egg: chemistry and biology*. London, UK: John Wiley.
- Bush, L. and White, H. B.** (1989). Avidin traps biotin diffusing out of chicken egg-yolk. *Comp. Biochem. Physiol.* **93**, 543-547.
- Christensen, V. L.** (2001). Factors associated with early embryonic mortality. *Worlds Poult. Sci. J.* **57**, 359-372.
- Couch, J. R., Cravens, W. W., Elvehjem, C. A. and Halpin, J. G.** (1948). Relation of carbohydrate to intestinal synthesis of biotin and hatchability in mature fowl. *J. Nutr.* **35**, 57-72.
- Cravens, W. W., McGibbon, W. H. and Sebesta, E. E.** (1944). Effect of biotin deficiency on embryonic development in the domestic fowl. *Anat. Rec.* **90**, 55-64.
- D'Alba, L., Shawkey, M. D., Korsten, P., Vedder, O., Kingma, S. A., Komdeur, J. and Beissinger, S. R.** (2010). Differential deposition of antimicrobial proteins in blue tit (*Cyanistes caeruleus*) clutches by laying order and male attractiveness. *Behav. Ecol. Sociobiol.* **64**, 1037-1045.
- D'Alba, L. and Torres, R.** (2007). Seasonal egg-mass variation and laying sequence in a bird with facultative brood reduction. *Auk* **124**, 643-652.

- Dakshinamurti, K.** (1994). Biotin. In *Modern Nutrition in Health and Disease* (ed. M. E Shils, J. A Olson and M. Shike, pp. 426–431. Philadelphia: Lea and Febiger.
- Dakshinamurti, K.** (2003). Regulation of gene expression by biotin, vitamin B6 and vitamin C. In *Molecular Nutrition* (ed. H. Daniel and J. Zempleni, pp. 151-165. Oxfordshire: CABI Publishing.
- Dakshinamurti, K.** (2005). Biotin - a regulator of gene expression. *J. Nutr. Biochem.* **16**, 419-423.
- DeLange, R. J.** (1970). Egg white avidin. 1. Amino acid composition-sequence of amino-terminal and carboxyl-terminal cyanogen bromide peptides. *J. Biol. Chem.* **245**, 907-916.
- Elo, H. A. and Korpela, J.** (1984). The occurrence and production of avidin - a new conception of the high-affinity biotin-binding protein. *Comp. Biochem. Physiol. B.* **78**, 15-20.
- Finkler, M. S., Van Orman, J. B. and Sotherland, P. R.** (1998). Experimental manipulation of egg quality in chickens: influence of albumen and yolk on the size and body composition of near-term embryos in a precocial bird. *J. Compar. Physiol. B.* **168**, 17-24.
- Foye, O. T., Ferket, P. R. and Uni, Z.** (2007). Ontogeny of energy and carbohydrate utilisation of the precocial avian embryo and hatchling. *Avian Poult. Biol. Rev.* **18**, 93-101.
- Giansanti, F., Leboffe, L., Pitari, G., Ippoliti, R. and Antonini, G.** (2012). Physiological roles of ovotransferrin. *BBA-Gen. Subjects* **1820**, 218-225.
- Gil, D.** (2003). Golden eggs: Maternal manipulation of offspring phenotype by egg androgen in birds. *Ardeola* **50**, 281-294.
- Green, N. M.** (1975). Avidin. *Adv. Protein. Chem.* **29**, 85-133.
- Grizard, S., Versteegh, M. A., Ndithia, H. K., Salles, J. F. and Tieleman, B. I.** (2015). Shifts in bacterial communities of eggshells and antimicrobial activities in eggs during incubation in a ground-nesting passerine. *PLoS ONE* **10**, e0121716.
- Groothuis, T. G. G., Muller, W., Von Engelhardt, N., Carere, C. and Eising, C.** (2005). Maternal hormones as a tool to adjust offspring phenotype in avian species. *Neurosci. Biobehav. Rev.* **29**, 329-352.
- Groothuis, T. G. G. and Von Engelhardt, N.** (2005). Investigating maternal hormones in avian eggs: measurement, manipulation, and interpretation. *Ann. NY. Acad. Sci.* **1046**, 168-180.
- Hamburger, V. and Hamilton, H. L.** (1992). A series of normal stages in the development of the chick-embryo, (reprinted from *Journal of Morphology*, vol 88, 1951). *Dev. Dyn.* **195**, 231-272.
- Hasselquist, D. and Nilsson, J. A.** (2009). Maternal transfer of antibodies in vertebrates: trans-generational effects on offspring immunity. *Philos. T. Roy. Soc. B.* **364**, 51-60.
- Hill, W. L.** (1995). Intraspecific variation in egg composition. *Wilson Bull* **107**, 382-387.
- Hocking, P. M., Stevenson, E. and Beard, P. M.** (2013). Supplementary biotin decreases tibial bone weight, density and strength in riboflavin-deficient starter diets for turkey poults. *Brit. Poult. Sci.* **54**, 801-809.

- Horak, D. and Albrecht, T.** (2007). Using net sacks to examine the relationship between egg size and young size in Common Pochards. *J. Field Ornithol.* **78**, 334-339.
- Horrocks, N. P. C., Hine, K., Hegemann, A., Ndithia, H. K., Shobrak, M., Ostrowski, S., Williams, J. B., Matson, K. D. and Tieleman, B. I.** (2014). Are antimicrobial defences in bird eggs related to climatic conditions associated with risk of trans-shell microbial infection? *Front. Zool.* **11**, 49.
- Hyankova, L., Novotna, B., Knizetova, H. and Horackova, S.** (2004). Divergent selection for shape of growth curve in Japanese quail. 2. Embryonic development and growth. *Brit. Poult. Sci.* **45**, 171-179.
- Hyankova, L., Novotna, B. and Starosta, F.** (2015). Divergent selection for shape of the growth curve in Japanese quail. 8. Effect of long-term selection on embryonic development and growth. *Brit. Poult. Sci.* **56**, 184-194.
- Ishaq, H. M., Akram, M., Baber, M. E., Jatoi, A. S., Sahota, A. W., Javed, K., Mehmood, S., Hussain, J. and Husnain, F.** (2014). Embryonic mortality in Cobb broiler breeder strain with three egg weight and storage periods at four production phases. *J. Anim. Plant Sci.* **24**, 1623-1628.
- Javurkova, V., Albrecht, T., Mrazek, J. and Kreisinger, J.** (2014). Effect of intermittent incubation and clutch covering on the probability of bacterial trans-shell infection. *Ibis* **156**, 374-386.
- Javurkova, V., Krkavcova, E., Kreisinger, J., Hyrsil, P. and Hyankova, L.** (2015). Effects of experimentally increased in ovo lysozyme on egg hatchability, chicks complement activity, and phenotype in a precocial bird. *J. Exp. Zool. Part A* **323**, 497-505.
- Korpela, J., Kulomaa, M., Tuohimaa, P. and Vaheri, A.** (1983). Avidin is induced in chicken-embryo fibroblasts by viral transformation and cell-damage. *Embo. J.* **2**, 1715-1719.
- Kriengwatana, B., Wada, H., Macmillan, A. and MacDougall-Shackleton, S. A.** (2013). Juvenile nutritional stress affects growth rate, adult organ mass, and innate immune function in Zebra Finches (*Taeniopygia guttata*). *Physiol. Biochem. Zool.* **86**, 769-781.
- Krist, M.** (2011). Egg size and offspring quality: a meta-analysis in birds. *Biol. Rev.* **86**, 692-716.
- Lawrence, M. A.** (2012). ez: Easy analysis and visualization of factorial experiments. *R package version 4.1-1*. <http://CRAN.R-project.org/package=ez>.
- Liu, L., Qin, D. K., Wang, X. F., Feng, Y., Yang, X. J. and Yao, J. H.** (2015). Effect of immune stress on growth performance and energy metabolism in broiler chickens. *Food Agr. Immunol.* **26**, 194-203.
- Manthey, K. C., Griffin, J. B. and Zemleni, J.** (2002). Biotin supply affects expression of biotin transporters, biotinylation of carboxylases and metabolism of interleukin-2 in Jurkat cells. *J. Nutri.* **132**, 887-892.

- Moran, E. T.** (2006). Nutrition of the developing embryo and hatchling. *Poult. Sci.* **85**, 141-141.
- Moran, E. T.** (2007). Nutrition of the developing embryo and hatchling. *Poult. Sci.* **86**, 1043-1049.
- Mousseau, T. A. and Fox, C. W.** (1998). The adaptive significance of maternal effects. *Trends Ecol. Evol.* **13**, 403-407.
- Muniyappa, K. and Adiga, P. R.** (1979). Isolation and characterization of thiamin-binding protein from chicken egg-white. *Biochem. J.* **177**, 887-894.
- Navara, K. J. and Mendonca, M. T.** (2008). Yolk androgens as pleiotropic mediators of physiological processes: A mechanistic review. *Comp. Biochem. Physiol. A.* **150**, 378-386.
- Palmer, B. D. and Guillette, L. J. Jr.** (1991). Oviductal proteins and their influence on embryonic development in birds and reptiles. In *Egg incubation: its effects on embryonic development in birds and reptiles*. (ed. M.W. J Ferguson and D. C Deeming, pp. 29–46. Cambridge, UK: Cambridge University Press.
- Pedroso, A. A., Café, M. B., Mogyca Leandro, N. S., Stringhini, J. H. and Chaves, L. S.** (2006). Embryonic development and hatchability of quail eggs stored for different periods and incubated at different humidity and temperatures levels. *Rev. Bras. Zootecn.* **35**, 2344-2349.
- Pinowski J., Barkowska, M., Kruszewicz, A. H. and Kruszewicz, A. G.** (1994). The causes of the mortality of eggs and nestlings of *Passer* spp. *J. Biosci.* **19**, 441-451.
- R Core Team** (2013). R: A language and environment for statistical computing. *Austria: R Foundation for Statistical Computing. ISBN 3-900051-07-0.* <http://www.R-project.org/>.
- Saino, N., Dall'ara, P., Martinelli, R. and Moller, A. P.** (2002). Early maternal effects and antibacterial immune factors in the eggs, nestlings and adults of the barn swallow. *J. Evol. Biol.* **15**, 735-743.
- Saino, N., Martinelli, R., Biard, C., Gil, D., Spottiswoode, C. N., Rubolini, D., Surai, P. F. and Moller, A. P.** (2007). Maternal immune factors and the evolution of secondary sexual characters. *Behav. Ecol.* **18**, 513-520.
- Schmidt, K. L., Kubli, S. P., MacDougall-Shackleton, E. A. and MacDougall-Shackleton, S. A.** (2015). Early-life stress has sex-specific effects on immune function in adult Song Sparrows. *Physiol. Biochem. Zool.* **88**, 183-194.
- Schwabl, H.** (1993). Yolk is a source of maternal testosterone for developing birds. *P. Natl. Acad. Sci. USA* **90**, 11446-11450.
- Schwabl, H.** (1996). Maternal testosterone in the avian egg enhances postnatal growth. *Comp. Biochem. Physiol. A* **114**, 271-276.
- Sellier, N., Brun, J. M., Richard, M. M., Batellier, F., Dupuy, V. and Brillard, J. P.** (2005). Comparison of fertility and embryo mortality following artificial insemination of common duck females (*Anas platyrhynchos*) with semen from common or Muscovy (*Cairina moschata*) drakes.

*Theriogenology* **64**, 429-439.

**Shawkey, M. D., Kosciuch, K. L., Liu, M., Rohwer, F. C., Loos, E. R., Wang, J. M. and Beissinger, S. R.** (2008). Do birds differentially distribute antimicrobial proteins within clutches of eggs? *Behav. Ecol.* **19**, 920-927.

**Sunny, N. E. and Bequette, B. J.** (2010). Gluconeogenesis differs in developing chick embryos derived from small compared with typical size broiler breeder eggs. *J. Anim. Sci.* **88**, 912-921.

**Takechi, R., Taniguchi, A., Ebara, S., Fukui, T. and Watanabe, T.** (2008). Biotin deficiency affects the proliferation of human embryonic palatal mesenchymal cells in culture. *J. Nutr.* **138**, 680-684.

**Taniguchi, A. and Watanabe, T.** (2007). Roles of biotin in growing ovarian follicles and embryonic development in domestic fowl. *J. Nutr. Sci. Vitaminol.* **53**, 457-463.

**Valenciano, A. I., Mayordomo, R., de la Rosa, E. J. and Hallbook, F.** (2002). Biotin decreases retinal apoptosis and induces eye malformations in the early chick embryo. *Neuroreport* **13**, 297-299.

**Wang, X. F., Li, Y. L., Shen, J., Wang, S. Y., Yao, J. H. and Yang, X. J.** (2015). Effect of Astragalus polysaccharide and its sulfated derivative on growth performance and immune condition of lipopolysaccharide-treated broilers. *Int. J. Biol. Macromol.* **76**, 188-194.

**Watanabe, T.** (1993). Dietary biotin deficiency affects reproductive function and prenatal development in hamsters. *J. Nutr.* **123**, 2101-2108.

**Watanabe, T., Nagai, Y., Taniguchi, A., Ebara, S., Kimura, S. and Fukui, T.** (2009). Effects of biotin deficiency on embryonic development in mice. *Nutrition* **25**, 78-84.

**Watkins, B. A.** (1989). Influences of biotin deficiency and dietary trans-fatty acids on tissue-lipids in chickens. *Brit. J. Nutr.* **61**, 99-111.

**Wellman-Labadie, O., Picman, J. and Hincke, M. T.** (2008). Comparative antibacterial activity of avian egg white protein extracts. *Brit. Poult. Sci.* **49**, 125-132.

**White, H. B. and Merrill, A. H.** (1988). Riboflavin-binding proteins. *Ann. Rev. Nutr.* **8**, 279-299.

**White, H. B., Orth, W. H., Schreiber, R. W. and Whitehead, C. C.** (1992). Availability of avidin-bound biotin to the chicken-embryo. *Arch. Biochem. Biophys.* **298**, 80-83.

**White, H. B. and Whitehead, C. C.** (1987). Role of avidin and other biotin-binding proteins in the deposition and distribution of biotin in chicken eggs - discovery of a new biotin-binding protein. *Biochem. J.* **241**, 677-684.

**Whitehead, C. C., Pearson, R. A. and Herron, K. M.** (1985). Biotin requirements of broiler breeders fed diets of different protein-content and effect of insufficient biotin on the viability of progeny. *Brit. Poult. Sci.* **26**, 73-82.

**Williams, T.D.** (1994). Intraspecific variation in egg size and egg composition in birds - effects on

offspring fitness. *Biol. Rev. Camb. Philos.* **69**, 35-59.

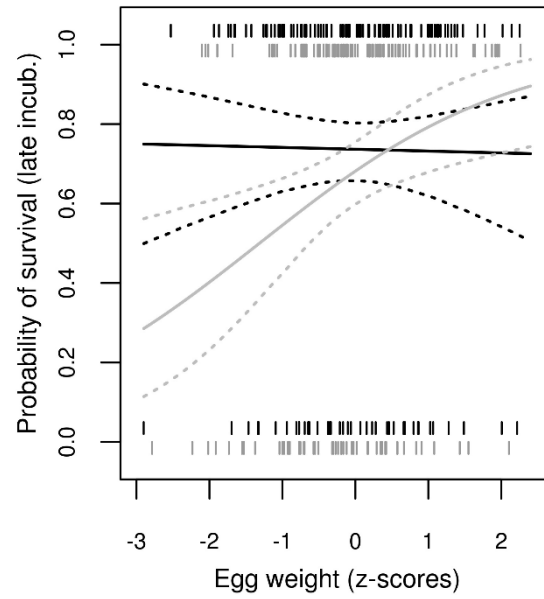
**Zempleni, J., Wijeratne, S. S. K. and Hassan, Y. I.** (2009). Biotin. *Biofactors* **35**, 36-46.

**Zerega, B., Camardella, L., Cermelli, S., Sala, R., Cancedda, R. and Cancedda, F. D.** (2001). Avidin expression during chick chondrocyte and myoblast development in vitro and in vivo: regulation of cell proliferation. *J. Cell Sci.* **114**, 1473-1482.

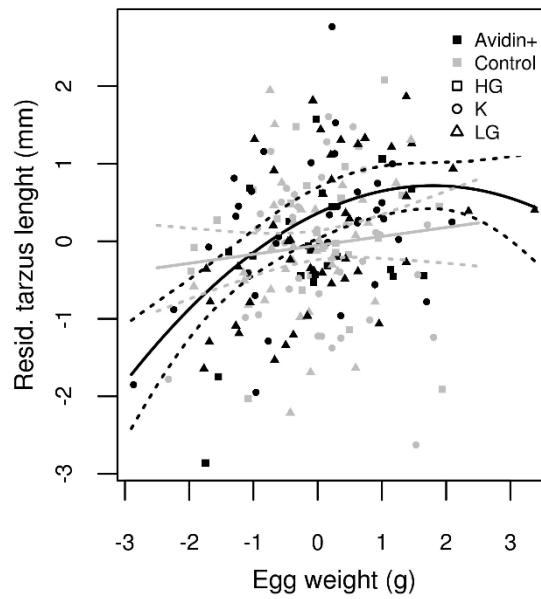
**Zheng, X. C., Wu, Q. J., Song, Z. H., Zhang, H., Zhang, J. F., Zhang, L. L., Zhang, T. Y., Wang, C. and Wang, T.** (2016). Effects of Oridonin on growth performance and oxidative stress in broilers challenged with lipopolysaccharide. *Poult. Sci.* **95**, 2281-2289.

**Zhu, Y. W., Xie, M., Huang, W., Yang, L. and Hou, S. S.** (2012). Effects of biotin on growth performance and foot pad dermatitis of starter White Pekin ducklings. *Brit. Poult. Sci.* **53**, 646-650.

**Figures:**

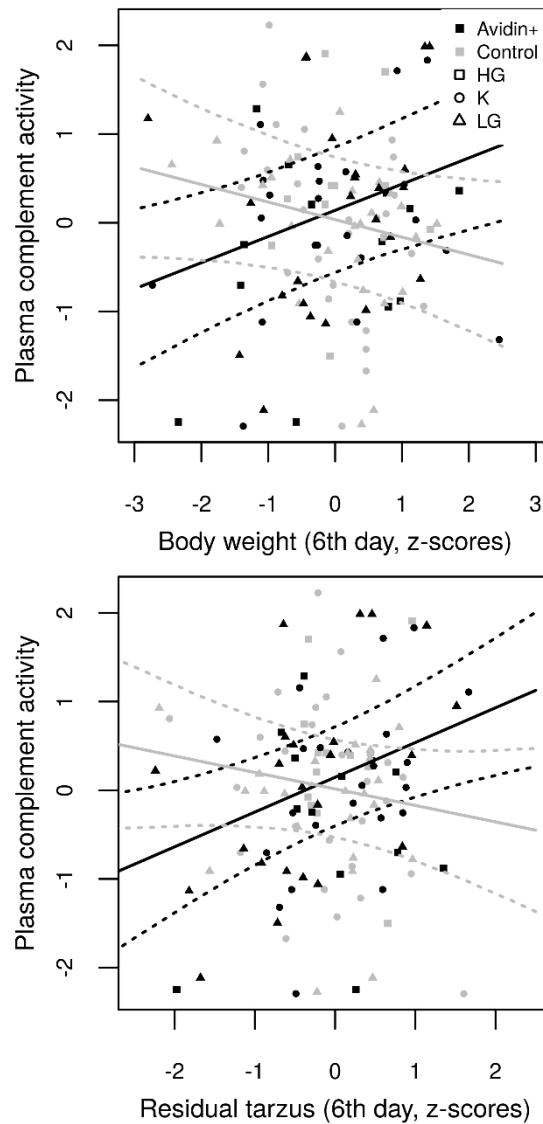


**Fig. 1. Interactive effect of egg white avidin treatment and egg weight on the probability of embryo survival during the late embryonic phase.** The PBS+ (control) and AVIDIN+ groups of eggs are plotted in grey and black, respectively. Model predictions and 95% bootstrap confidence intervals based on the GLMM have been computed using the ez package in R.



**Fig. 2. Interactive effect of egg white avidin treatment and egg weight on the relationship between residual tarsus length and egg weight in freshly hatched quail chicks.** The PBS+ (control) and AVIDIN+ groups are plotted in grey and black, respectively. Predictions for AVIDIN+ eggs were based on a quadratic GLMM and those for control PBS+ eggs using a linear GLMM. Model predictions and 95% bootstrap confidence intervals have been computed using the ez package in R.





**Fig. 3. Relationship between total plasma complement activity and A) body weight, and B) residual tarsus length for six-day-old quail chicks.** The PBS+ and AVIDIN+ groups are plotted in grey and black, respectively. Please note that there is an inverse scaling of plasma complement activity (i.e. a shorter time represents higher total plasma complement activity). Model predictions and 95% bootstrap confidence intervals based on GLMM have been computed using the ez package in R.

**Table 1: GLMM results for probability of hatching, probability of embryo survival during the early and late embryonic phases and overall post-hatching survival**

	D.f.	Hatching success		Early embryonic survival		Late embryonic survival		Post-hatching survival	
		$\chi^2$	p	$\chi^2$	p	$\chi^2$	p	$\chi^2$	p
egg weight	1	2.196	0.138	0.290	0.590	4.957	0.084	1.224	0.269
<b>quail line</b>	2	5.936	<b>0.051</b>	5.305	0.070	3.831	<b>0.050</b>	3.062	0.216
avidin treatment	1	1.451	0.228	0.379	0.538	1.295	0.255	1.143	0.285
<b>egg weight × quail line</b>	2	5.438	0.066	3.532	0.171	6.627	<b>0.036</b>	4.202	0.122
<b>egg weight × avidin treatment</b>	1	1.095	0.295	0.020	0.888	4.780	<b>0.029</b>	0.014	0.907
quail line × avidin treatment	2	2.062	0.357	0.542	0.763	2.574	0.276	5.077	0.079

Significance values correspond to the likelihood-ratio tests. Significant effects ( $\alpha = 0.05$ ) are in bold.

**Table 2. GLMM results for body weight and residual tarsus length in freshly hatched chicks**

FRESHLY HATCHED CHICKS	D.f.	Body weight		Residual tarsus length	
		$\chi^2$	p	$\chi^2$	p
<b>egg weight</b>	1	149.550	<b>&lt; 0.001</b>	16.304	<b>&lt; 0.001</b>
quail line	2	0.603	0.740	0.038	0.981
avidin treatment	1	0.210	0.647	0.800	0.371
egg weight × quail line	2	3.687	0.158	2.548	0.280
egg weight × avidin treatment	1	0.571	0.450	3.519	0.061
quail line × avidin treatment	2	2.138	0.343	2.955	0.228

Significance values correspond to the likelihood-ratio tests. Significant effects ( $\alpha = 0.05$ ) are in bold.

**Table 3. GLMM results for variation in chick body weight and residual tarsus length over the 15-d post-hatching period = “growth performance”**

GROWTH PERFORMANCE	D.f.	Body weight		Residual tarsus length	
		$\chi^2$	p	$\chi^2$	p
chicks age	1	0.435	0.509	0.863	0.353
avidin treatment	1	0.456	0.500	0.513	0.474
LPS treatment	1	1.334	0.248	1.170	0.279
quail line	2	0.157	0.924	0.081	0.960
chicks age x avidin treatment	1	0.083	0.773	0.345	0.557
<b>chicks age x LPS treatment</b>	1	5.903	<b>0.015</b>	18.765	<b>&lt; 0.001</b>
chicks age x quail line	2	1.049	0.592	0.224	0.894
LPS treatment x avidin treatment	1	0.444	0.505	0.086	0.769
quail line x avidin treatment	2	2.052	0.359	2.680	0.262
LPS treatment x quail line	2	0.428	0.807	0.386	0.825

Significance values correspond to the likelihood-ratio tests. Significant effects ( $\alpha = 0.05$ ) are in bold.

**Table 4. GLMM results for the effect of LPS treatment and other covariates related to changes in chicks body weight and residual tarsus length between third and sixth day post-hatching**

LPS TREATMENT	D.f.	Body weight change		Residual tarsus length change	
		$\chi^2$	p	$\chi^2$	p
<b>LPS</b>	1	28.910	<b>0.000</b>	4.902	<b>0.027</b>
quail line	2	0.159	0.924	0.080	0.961
avidin treatment	1	1.283	0.257	0.672	0.412
LPS × quail line	2	0.242	0.886	5.541	0.063
LPS × avidin treatment	1	0.022	0.883	1.657	0.198
quail line × avidin treatment	2	3.842	0.147	0.193	0.908

Significance values correspond to the likelihood-ratio tests. Significant effects ( $\alpha = 0.05$ ) are in bold.

**Table 5. GLMM results for the plasma complement activity and other covariates measured sixth day post-hatching.**

PLASMA COMPLEMENT					
ACTIVITY	D.f.	$\chi^2$	p	$\chi^2$	p
quail line	2	2.806	0.246	2.318	0.314
avidin treatment	1	0.502	0.479	0.343	0.558
morpho	1	1.847	0.174	1.972	0.160
quail line x avidin treatment	2	1.502	0.472	2.692	0.260
quail line x morpho	2	0.381	0.827	1.162	0.559
<b>morpho x avidin treatment</b>	1	9.973	<b>0.002</b>	8.317	<b>0.004</b>

Separate GLMM sets were used to fit the relationship between plasma complement activity and individual morphometric parameters (i.e. changes in either body weight or residual tarsus length between pre- vs. post- LPS treatment, denoted as 'morpho' in the table). Significance values correspond to the likelihood-ratio tests. Significant effects ( $\alpha = 0.05$ ) are in bold.