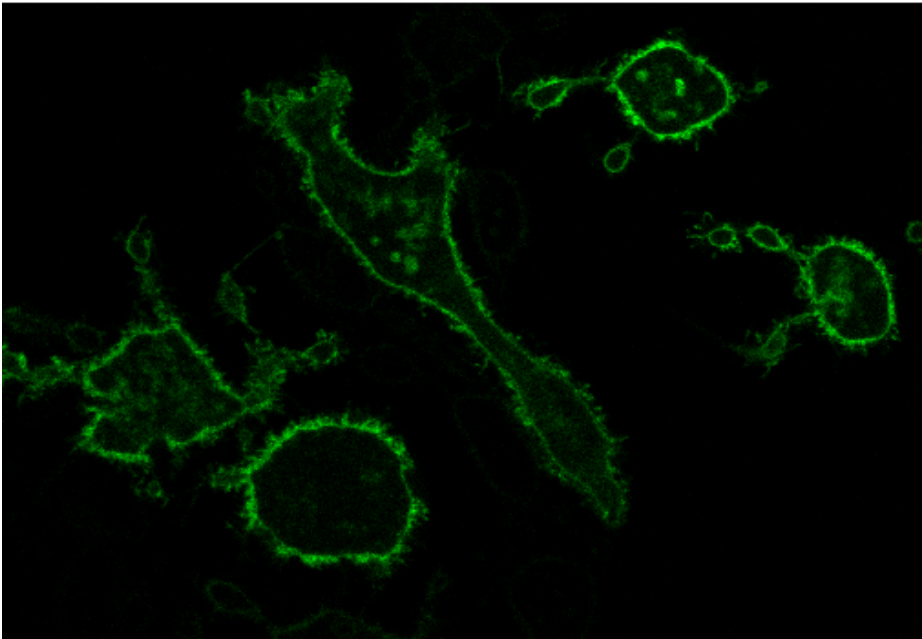


mYFP-GT46



+ 0.05% TX-100

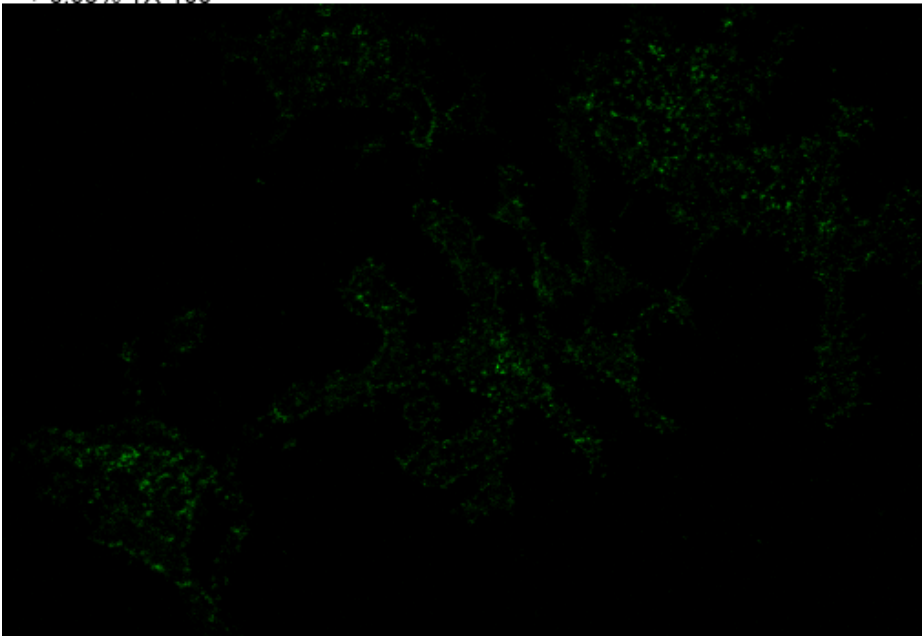


Figure S1. RBL 2H3 cells were transfected with mYFP-GT46 (Kenworthy et al., 2003), then incubated in BSS with or without 0.05% TX-100 (w/v) at 4°C and then fixed for confocal imaging. Quantification of confocal equatorial images similar to above indicated loss of greater than 95% mYFP fluorescence due to 0.04%TX-100 for >100 cells.

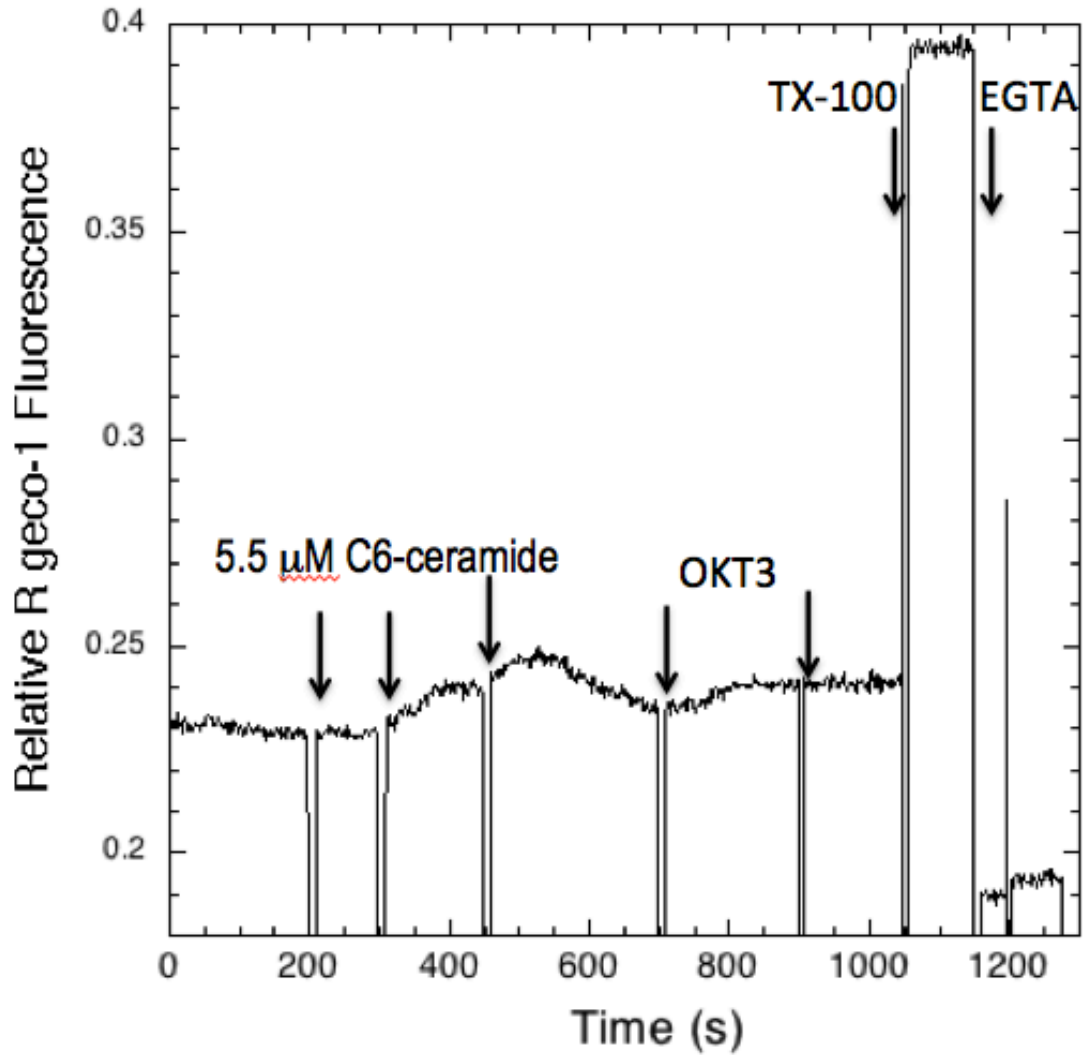


Figure S2. C6-ceramide, added at a final concentration of 16.5 μM prior to stimulation by 0.15 $\mu\text{g/ml}$ OKT3 largely inhibits the Ca^{2+} response to TCR in Jurkat cells.